



FUJIHD ELEVATOR PROFILE

- 2019

China-Japan Joint Ventures

FUJIHD ELEVATOR PROFILE - 2019

1. ABOUT FUJIHD
2. WHAT FUJIHD MAKE
3. SERVICE EXCELLENCE
4. QUALITY CONTROL
5. FUJIHD FACTORY
6. FUJIHD DESIGNS
7. PROJECTS

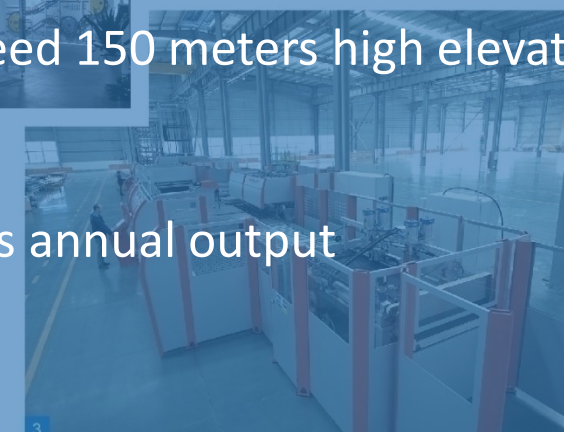
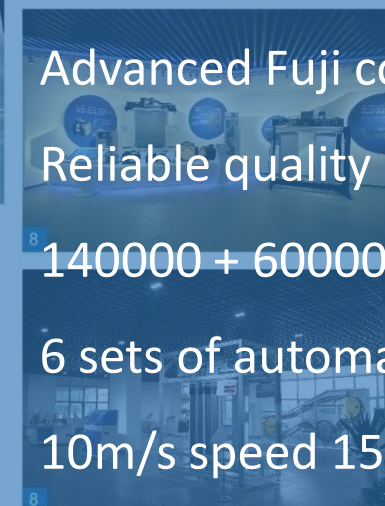


International Top Equipments



1. ABOUT FUJIHD

- The Largest FUJIHD Elevator factory in the world
- 30 Years abundant problem solving experience
- Advanced Fuji control technology
- Reliable quality and superior service
- 140000 + 60000 square meters Plant
- 6 sets of automatic production line
- 10m/s speed 150 meters high elevator testing tower
- 50000 sets annual output



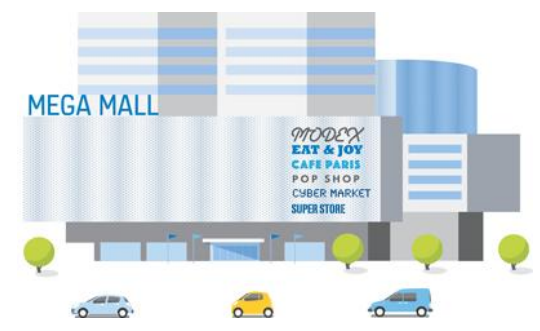


2. WHAT FUJIHD MAKE

Solution for different requirement



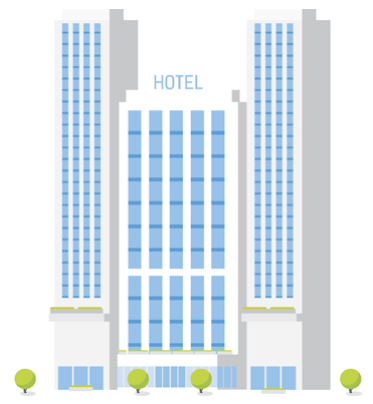
Residence



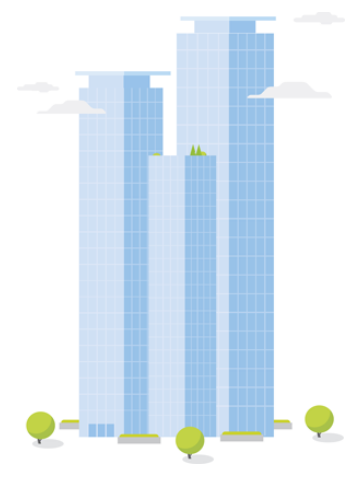
Commercial Building



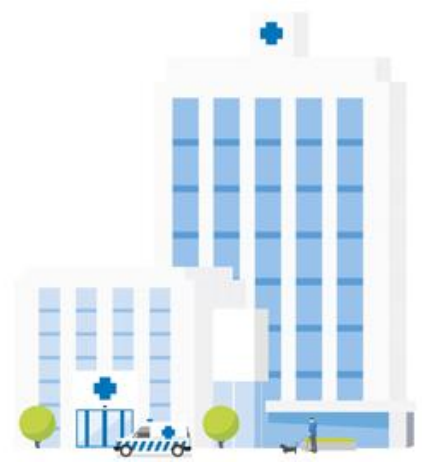
Relaxation education, special buildings



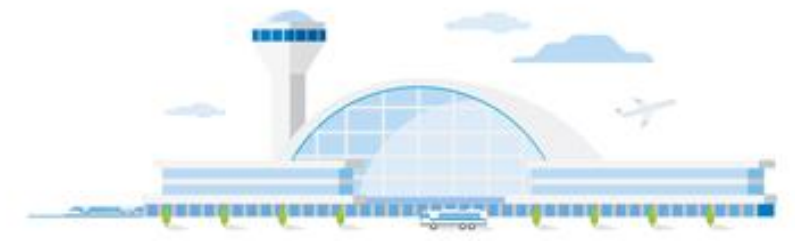
Hotel



Office



Hospital



Public transportation

Products

Efficient and energy-saving driving system



FUJI Escalator / Moving Walks



FUJI Small Machine Room Elevator



FUJI Machine Roomless Elevator



FUJI Freight Elevator



FUJI Scenic Elevator





3. SERVICE EXCELLENCE

Solution for the whole lifecycle

1. Design and produce

- Project Planning
- Design solution
- Produce



2. Installation

- Project management
- Installation method.

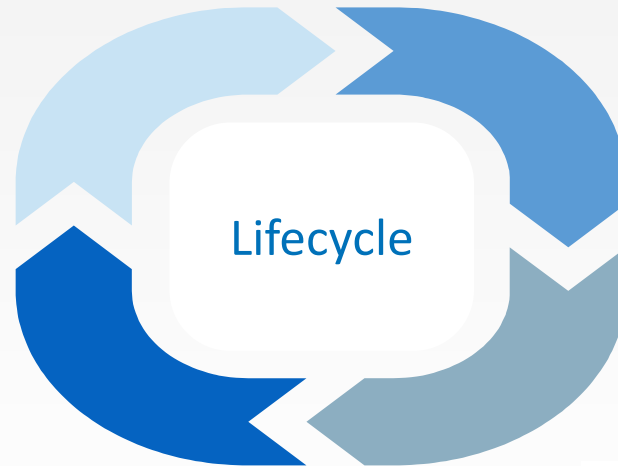
4. Renewal

- Initial evaluation
- Solution



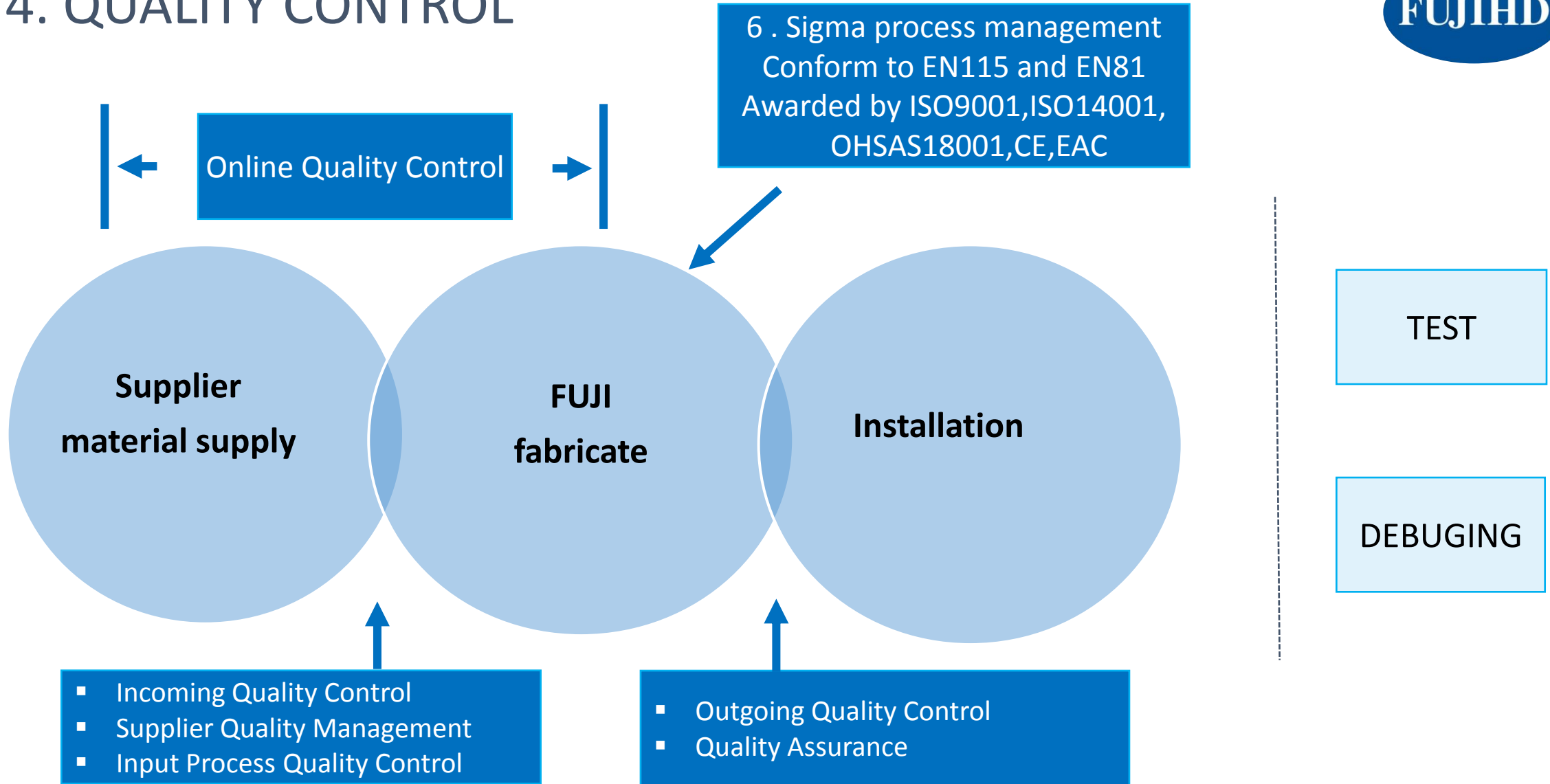
3. Maintenance plan

- Technical assistance
- Spare Parts support





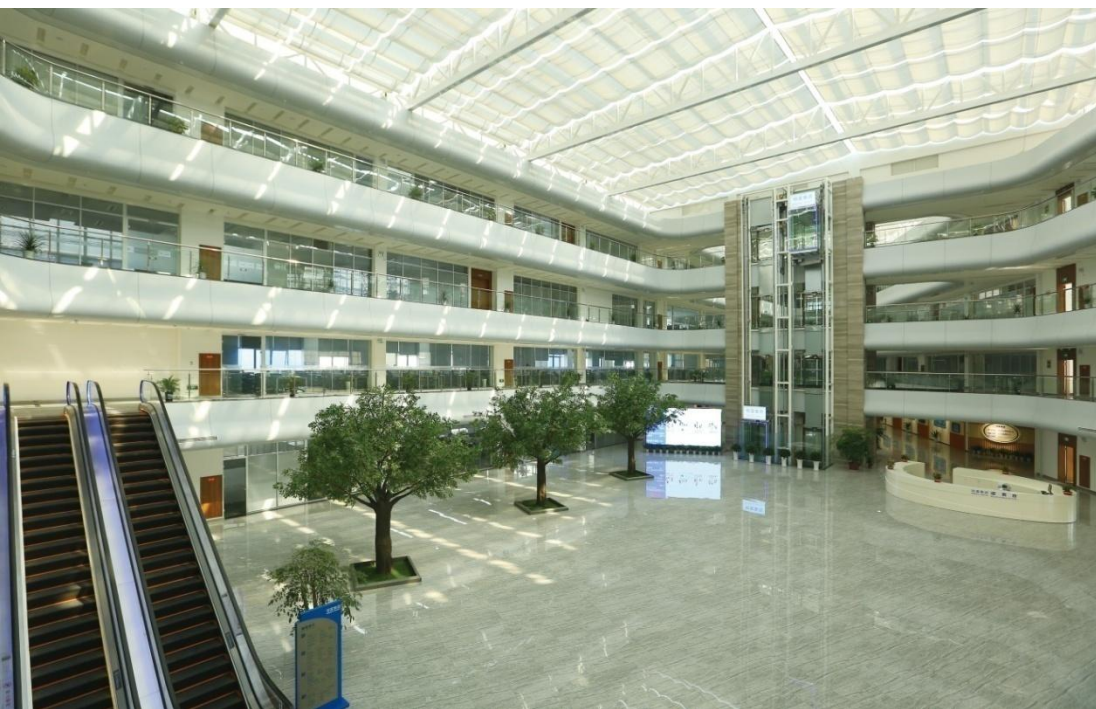
4. QUALITY CONTROL





5. FUJIHD FACTORY PROFILE

From end of 2016, the 4th plant is activated, this plant have total investment of USD130 million, which including 80,000 square meters of workshop and 18,000 square meters of office, equipped the advanced Germanic and Italian full-automatic metal plate production equipment.





Cabin

Production

Line



Cabin

Production

Line





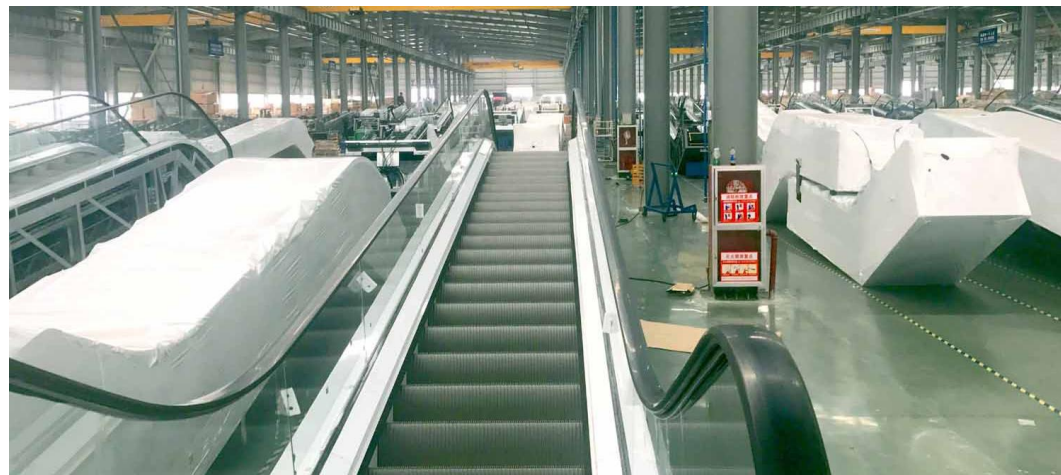
Doors

Production

Line



FUJI Motors



Escalator

Moving
walks

Production

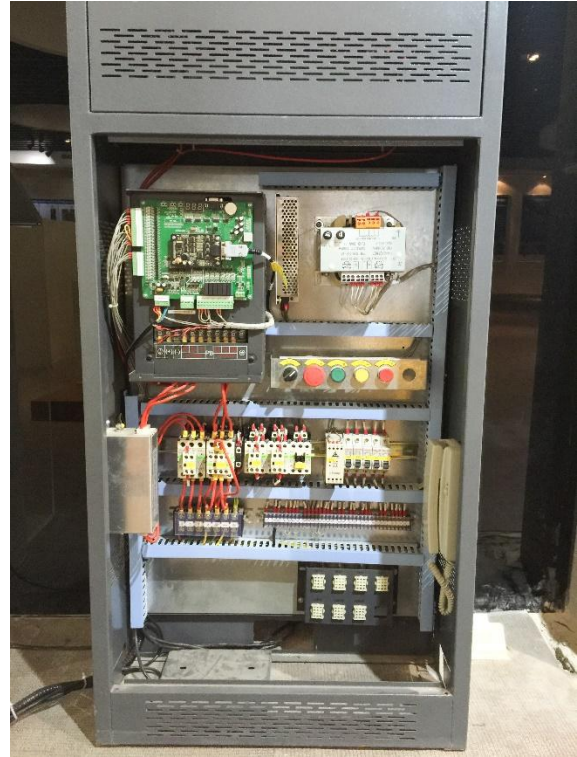
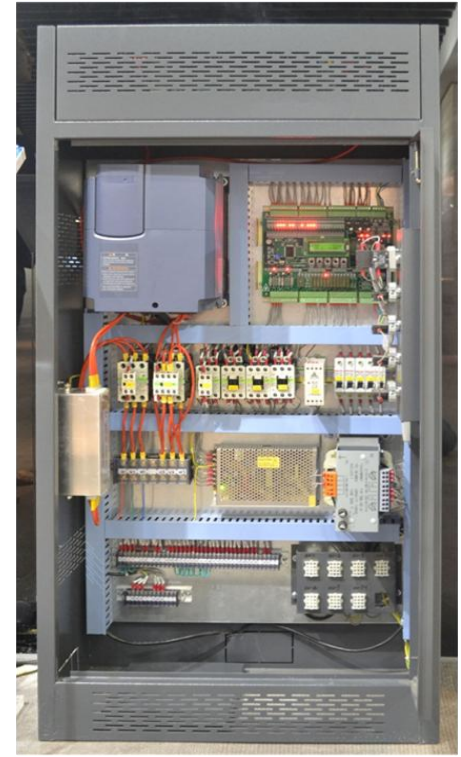
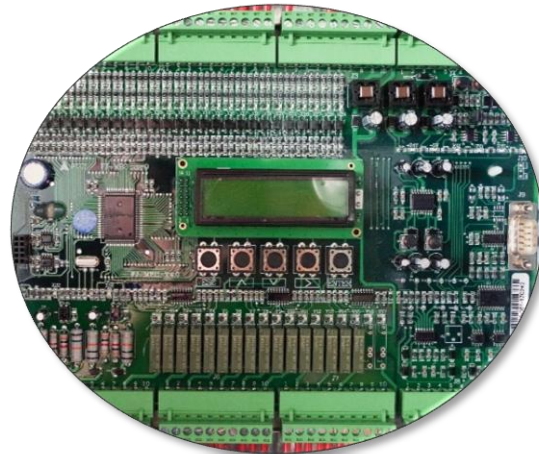
Line



Electric assembly workshop



FUJI inverter

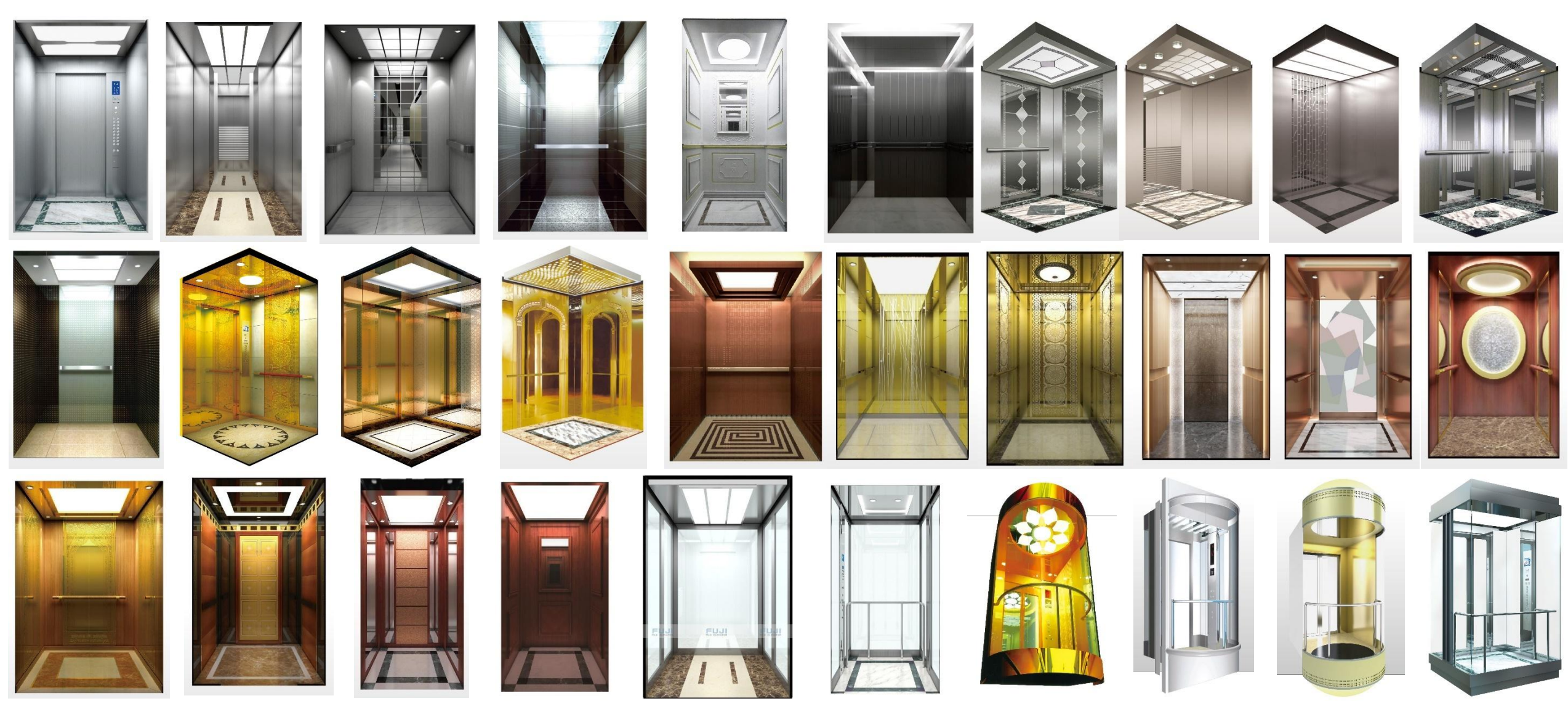




Warehouse

The delivery

6. FUJIHD DESIGNS - Diversified Designs



6. FUJIHD DESIGNS - Diversified Designs



FJ-X05A

Material
Stainless steel handrail

No bottom box calling (simplex)



FJ-X05A



FJ-C01



HD-COP03
Touch operation



FJ-C19



FJ-X19A



HD-COP06 HD-COP06A



HD-COP04



HD-COP04A



FJ-C15



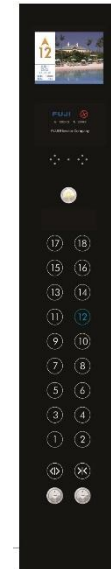
FJ-X15A



FJ-C17
Touch Operation panel



FJ-X17D



FJ-C04
Touch Operation Panel

Material
Black glass touch operation panel

Touch calling box(Simplex)



FJ-X004A



FJ-C18
Touch Operation panel



FJ-X18A

Projects

1 Project Location: **Juba, South Sudan**
Project Name: President's House



2 Project Location: **Karachi, Pakistan**
Project Name: Mr. Faisal's Cousin
Elevator: 25 units, 14 Floors 14 Stops



3 Project Location: **Australia**
Project Name: Wel Shpool
Elevator: 5 units



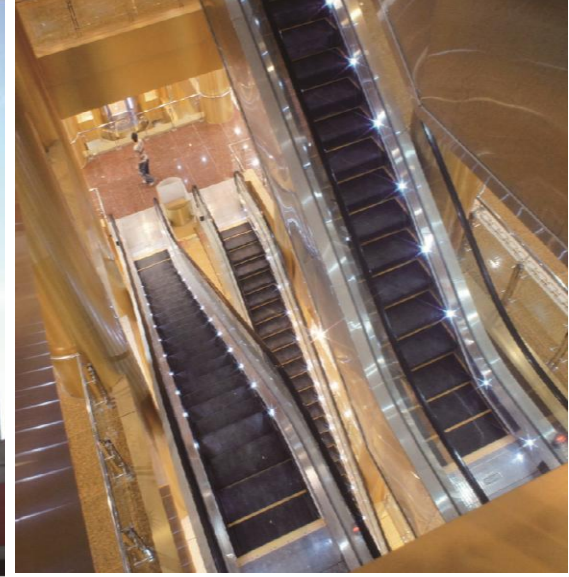
4 Project Location: **Brazil**
Project Name: Brazilian International Airport
Elevator Specifications: Escalator



1 Eastern Visayas Regional Medical Center - Philippines



2 Wind Playa Salguero - Colombia
The Project Wind Playa Salguero is located in Playa Salguero Santa Marta, an extraordinary location in the Caribbean Sea. Construction area of 15,000 square meters, 22 floors.



Sudan-Office Building



Karachi-PARADISE TOWER



IRAQ-BAGHDAD-PALESTINE STR



THANK YOU